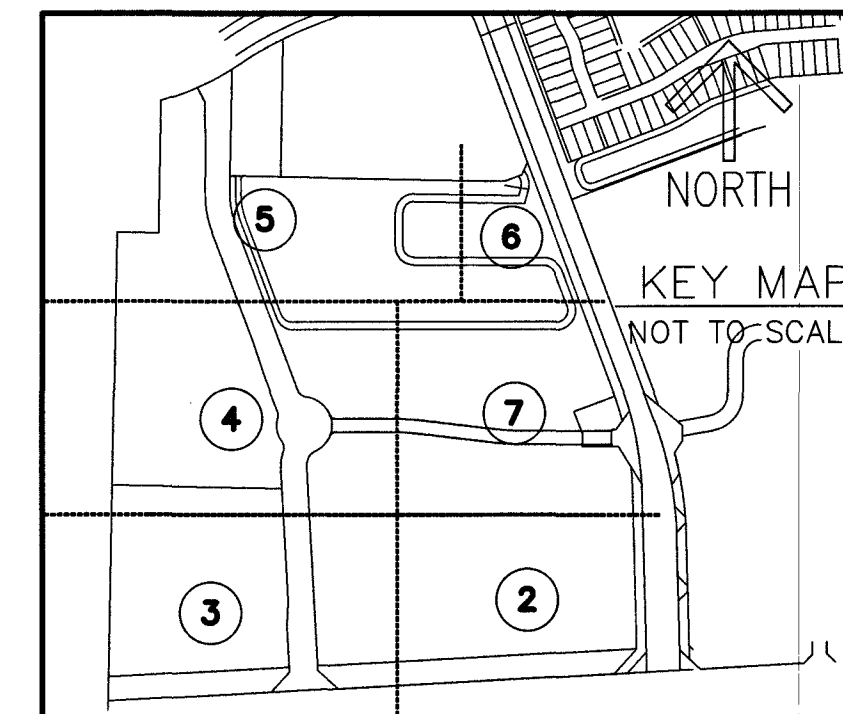


# AVENIR PARCEL D

BEING A REPLAT OF A PORTION OF PARCEL "A-1", AVENIR, AS RECORDED IN PLAT BOOK 127, PAGES 85 THROUGH 109 OF THE PUBLIC RECORDS OF PALM BEACH COUNTY, FLORIDA, LYING IN SECTION 15, TOWNSHIP 42 SOUTH, RANGE 41 EAST, CITY OF PALM BEACH GARDENS, PALM BEACH COUNTY, FLORIDA

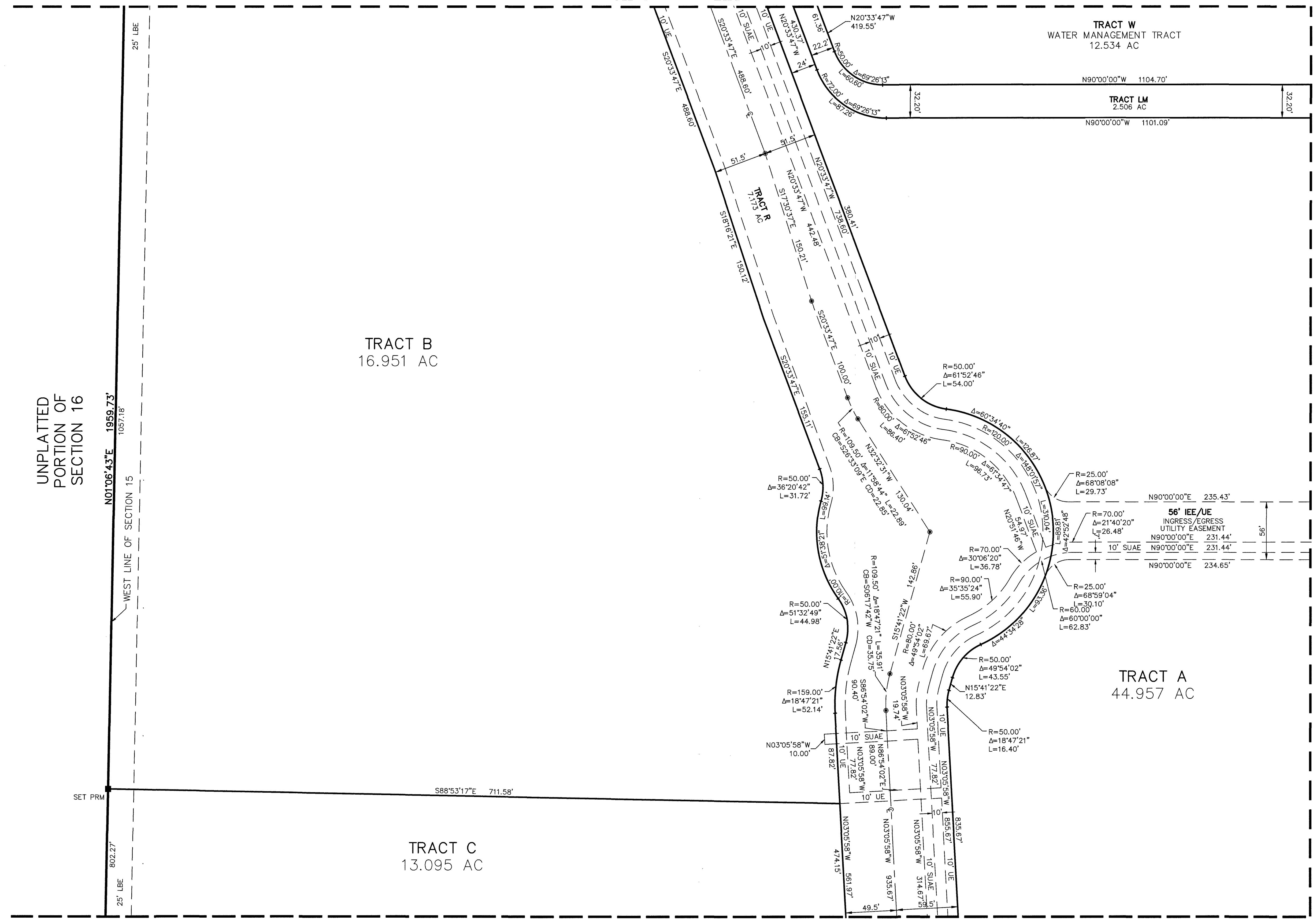
THIS INSTRUMENT PREPARED BY  
RONNIE L. FURNISS  
OF  
**CAULFIELD and WHEELER, INC.**  
SURVEYORS - ENGINEERS - PLANNERS  
7900 CLADES ROAD, SUITE 100  
BOCA RATON, FLORIDA 33434 - (561)392-1991  
CERTIFICATE OF AUTHORIZATION NO. LB3591  
NOVEMBER 2023



24

SHEET 4 OF 7

MATCH LINE SHEET 5



UNPLATTED  
PORTION OF  
SECTION 16

N01°06'43"E 1959.73'  
1057.78'

WEST LINE OF SECTION 15

SET PRM

802.27'  
25' LBE

TRACT B  
16.951 AC

TRACT C  
13.095 AC

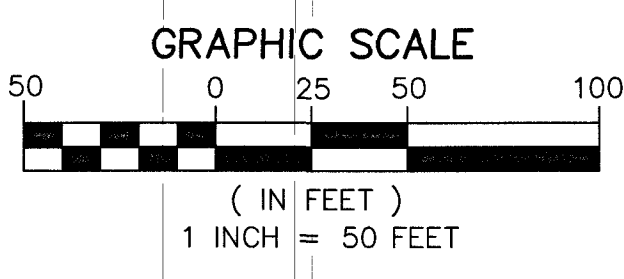
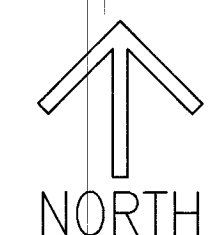
TRACT W  
WATER MANAGEMENT TRACT  
12.534 AC

TRACT LM  
2.506 AC

TRACT A  
44.957 AC

MATCH LINE SHEET 3

MATCH LINE SHEET 7



- LEGEND/ABBREVIATIONS**
- ± - CENTERLINE
  - Δ - DELTA (CENTRAL ANGLE)
  - AC - ACRES
  - CB - CHORD BEARING
  - CD - CHORD DISTANCE
  - DE - DRAINAGE EASEMENT
  - L - ARC LENGTH
  - LB - LICENSED BUSINESS
  - LBE - LANDSCAPE BUFFER EASEMENT
  - LSE - LIFT STATION EASEMENT
  - O.R.B. - OFFICIAL RECORD BOOK
  - PB - PLAT BOOK
  - PG - PAGE
  - R - RADIUS
  - (R) - INDICATES RADIAL LINE
  - (RB) - RADIAL BEARING
  - RBE - ROADWAY BUFFER EASEMENT
  - SUAEE - SEACOAST UTILITY AUTHORITY ACCESS EASEMENT
  - SUAU - SEACOAST UTILITY AUTHORITY EASEMENT
  - UE - UTILITY EASEMENT
  - PRM - DENOTES PERMANENT REFERENCE MONUMENT  
5/8" IRON ROD WITH CAP STAMPED  
"G&W PRM LB 3591"
  - - DENOTES PERMANENT CONTROL POINT